

BFO04

## Matt White PP Film 60µm

### Description

A white bi-axially oriented, polypropylene film with a print-receptive topcoat.

**Basis Weight** 56 g/m  
**Caliper** 60 µm

### Liner

BG40 white, a supercalendered glassine paper.

### Adhesive

A general purpose permanent, acrylic based adhesive.

### Performance Data

Min. Application Temp.: 5°C  
Service Temperature: -20°C to 80°C

### Adhesive Performance

S692N is a clear permanent adhesive featuring excellent UV resistance and weatherability together with good adhesion performance, even on apolar substrates.

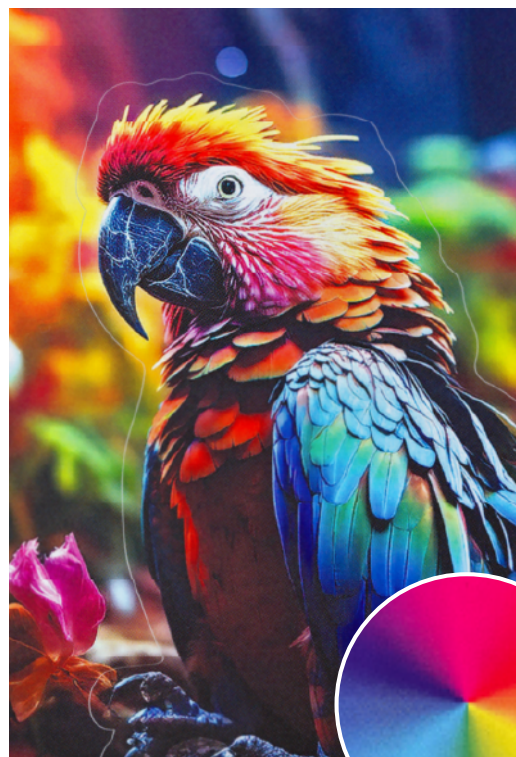
### Shelf Life

To obtain optimal performance, use this product within two years of the date of manufacture, under storage conditions as defined by FINAT (20-25°C; 40-50%RH). Prolonged storage outside these conditions might reduce the shelf life.

### Applications and Use

Applications are predominantly in market segments where rigid containers are used (e.g. Glass, PET). Due to fairly rigid nature of the film care should be taken with use on non-uniform surfaces.

These results are based on tests carried out by our suppliers and our own experience. Etiqueta.es cannot give any guarantee for the optimal adhesion of the materials. Etiqueta.es assumes that the customer checks the suitability of the materials, meets his needs and decides for the right material that meets his requirements. The labels should be stored in a dryplace, at an ambient temperature of between 20° - 24 °C and protected from the effects of the weather, such as sun, rain or snow. The adhesive reacts very quickly, especially to the effects of weathering.



Due to its rigidity, the material may peel off if applied on uneven surfaces.

## QUESTIONS? WE'RE HERE TO HELP!

+33 (0)4 81 68 19 73

info@labelletiquette.fr

The colour of the material shown may vary. Therefore, we recommend that you order our free online sample book at [label.co.uk/sample-book/](http://label.co.uk/sample-book/) to get a better understanding of the effects and different textures.

**Order free of charge:**

 **SAMPLE BOOK**